



MS 256 - MS 257

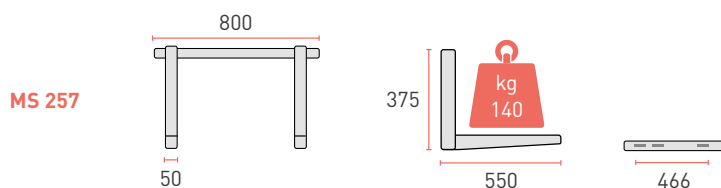
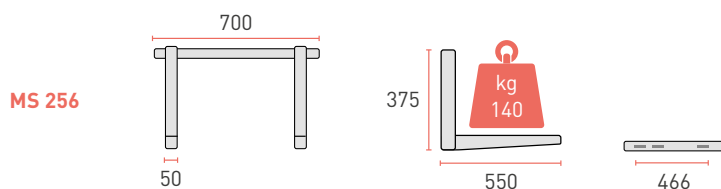
SLIDING BRACKETS

- ▶ Sliding
- Frontal hook
- Crossbar

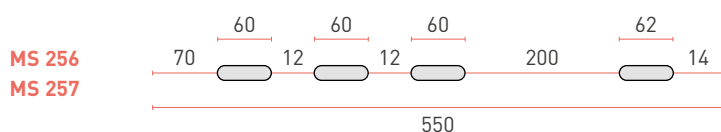
MENSOLE SCORREVOLI

- ▶ Scorrevole
- Aggancio frontale
- Barra a muro

DIMENSIONS AND LOADING CAPACITY



BRACKET DRILLING DIAGRAM



Adjustable rear foot



Wall fixing kit



Insulating washers



Pre assembled

MATERIALS AND TREATMENT

Materials: electro-galvanised steel plate

Treatment: painting epoxy resins in polyester

Colour: Ral 9002

Joint: high resistant screw M6×70 8.8

Adjustment: 2 adjustable gummy polypropilene feet (patented)

Equipped with: level to adjust the wall bar

LOAD CAPACITY

Domestic use: 140 kg

Load testing weight: 420 kg

BOX

Pack: carton box

Pieces: 1

Pack dimensions: 90×95×800 mm

Case weight: 4.2 kg

PALLET

Pallet dimensions: 120×80×100 cm

Pieces per pallet: 117

Pallet total weight: 500 kg



Management Systems
ISO 9001:2015
ISO 14001:2015
ISO 45001:2018
www.rodigas.com
It: 0166872006



Certified quality